

Support
bracket

Patent "closed"
section strut

Hole & Dowel
fixing

Slot & Blade
fixing

Any cladding
material

Insulation
Out-fixing

Rear
fixing

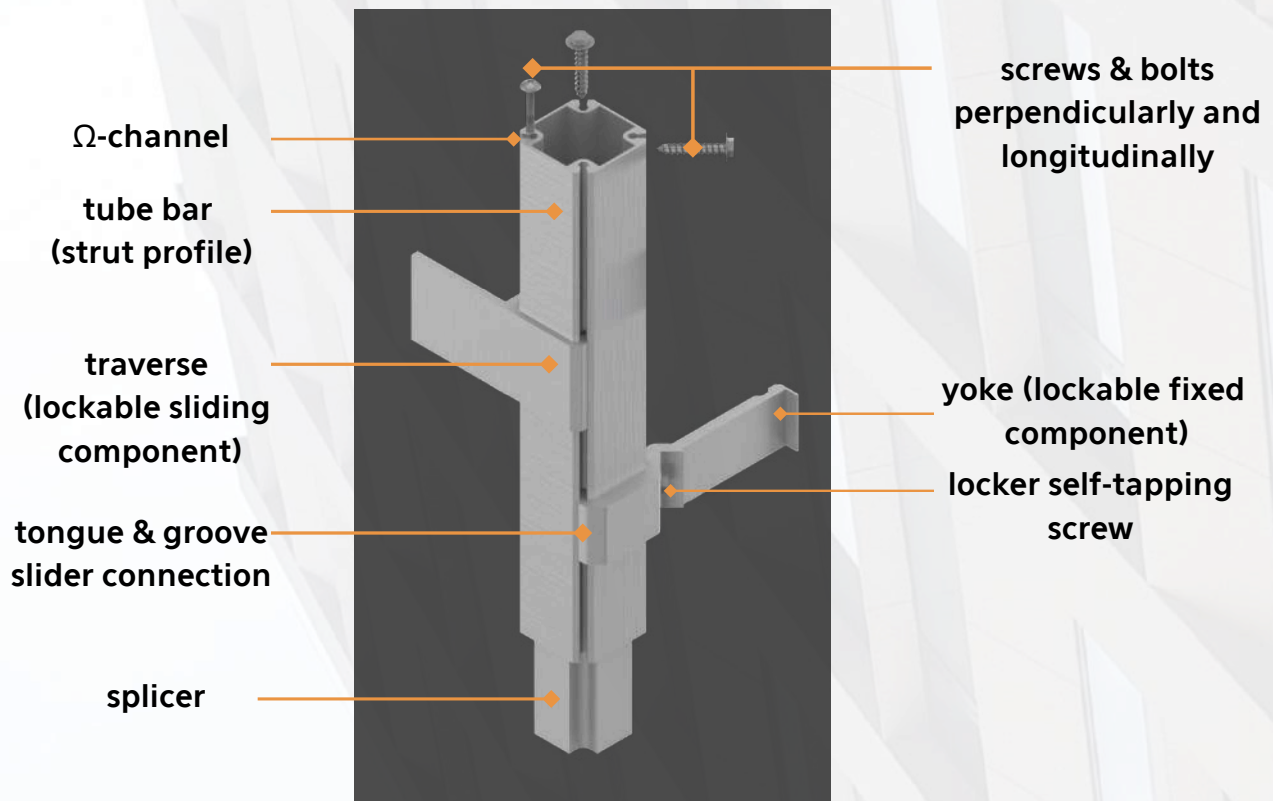
Retainer
brace

SYSTEMS FOR ANY:

- cladding material & size
- panel fixing method
- façade pattern & feature

Advanced solution for any cladding

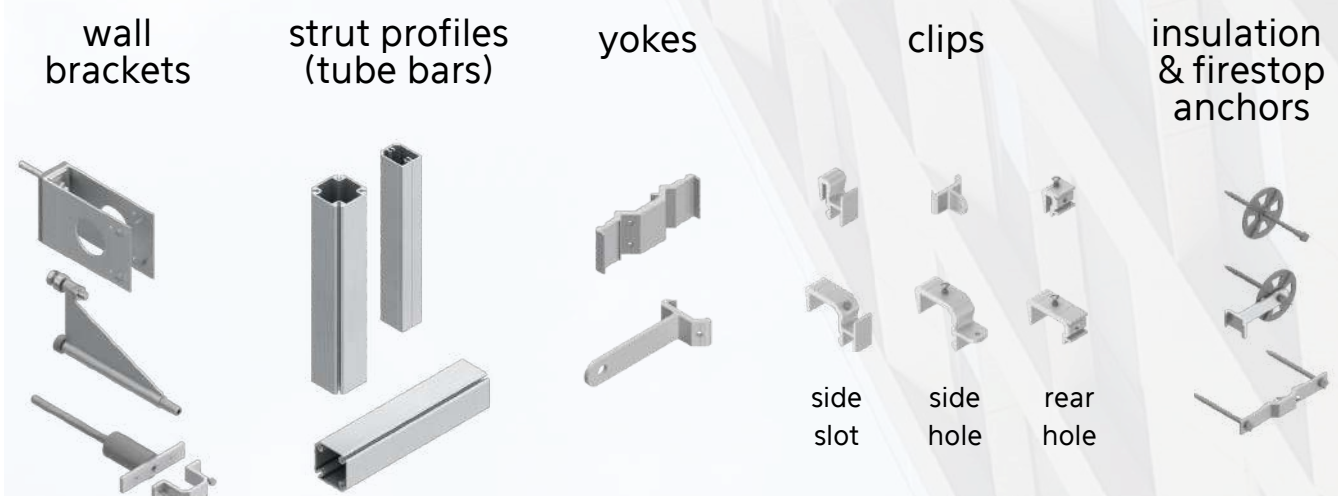
BILDA® Bar/strut - rigid & multifunctional



Composes light and resilient substructure grids and allows:



- also horizontal positioning for fixing of 'portrait' oriented cladding panels;
- quick locking attachment of components - dual penetration and fixing;
- pre-assembly of frames and spatial units by simple mechanical joining without welding.

BILDA® Components - integral & interlocking



- Simple and interactive inventory for the whole rainscreen envelope (cladding & insulation);
- Interchangeable, interlockable, multifunctional components;
- Facilitating accessories (scaffolding clamps, patchwork fixing set).

Structural Concept Comparison

	profile type	
closed section patent profile		open section simple profile
1100 g/m	profile weight	1200 g/m
4.69 cm³	section modulus (rigidity indicator)	2.60 cm³
1 bracket 1 brace	attachments per floor height	4-5 brackets

Your paragraph text

BILDA - creates leaner yet stronger assemblies:

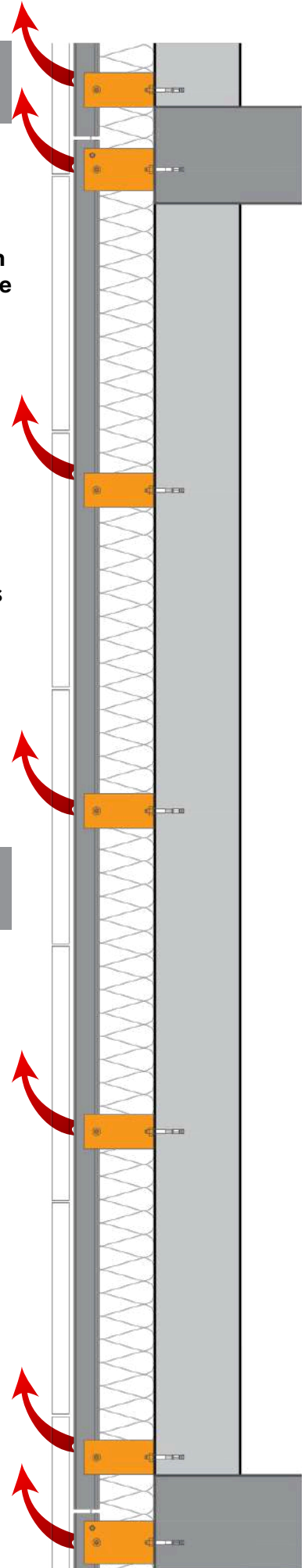
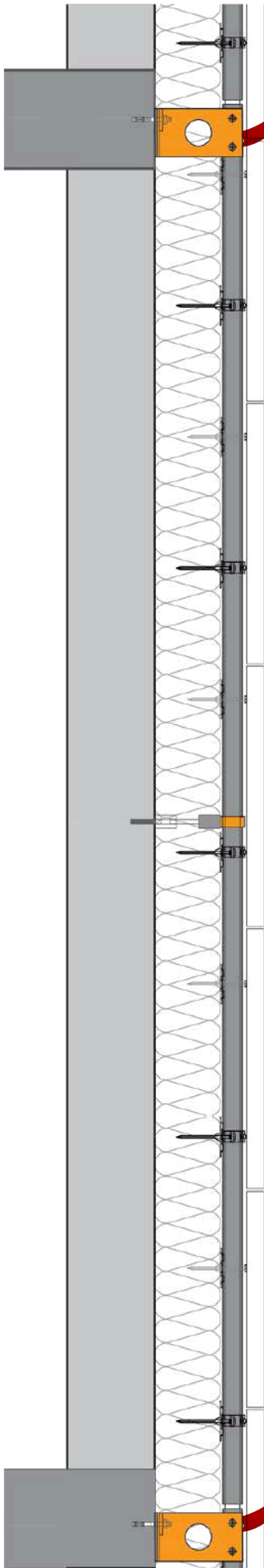
- saves fasteners, substructure and cladding material
- saves production and installation time at site
- achieves lowest embodied Carbon

Thermal Performance Comparison

Stainless steel	bracket material (SS less conductive)	Aluminium
Advanced	bracket thermal performance (acc. to PH Institute)	Basic
0.25/M²	brackets per square meter	1.20/M²
0.014 W/m²K	overall envelope heat loss (ΔU) (acc. to PH Institute)	0.030 W/m²K

BILDA - unmatched thermal performance:

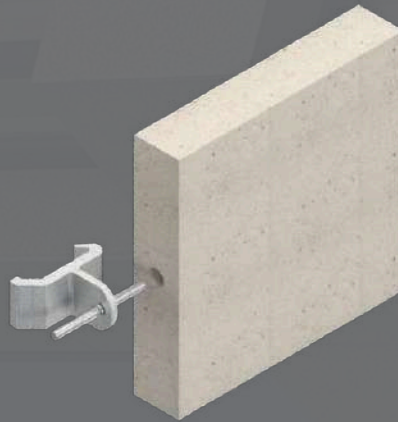
- minimizes thermal bridging of the building envelope
- achieves lowest operational Carbon



BILDA® One SuperSystem for any cladding



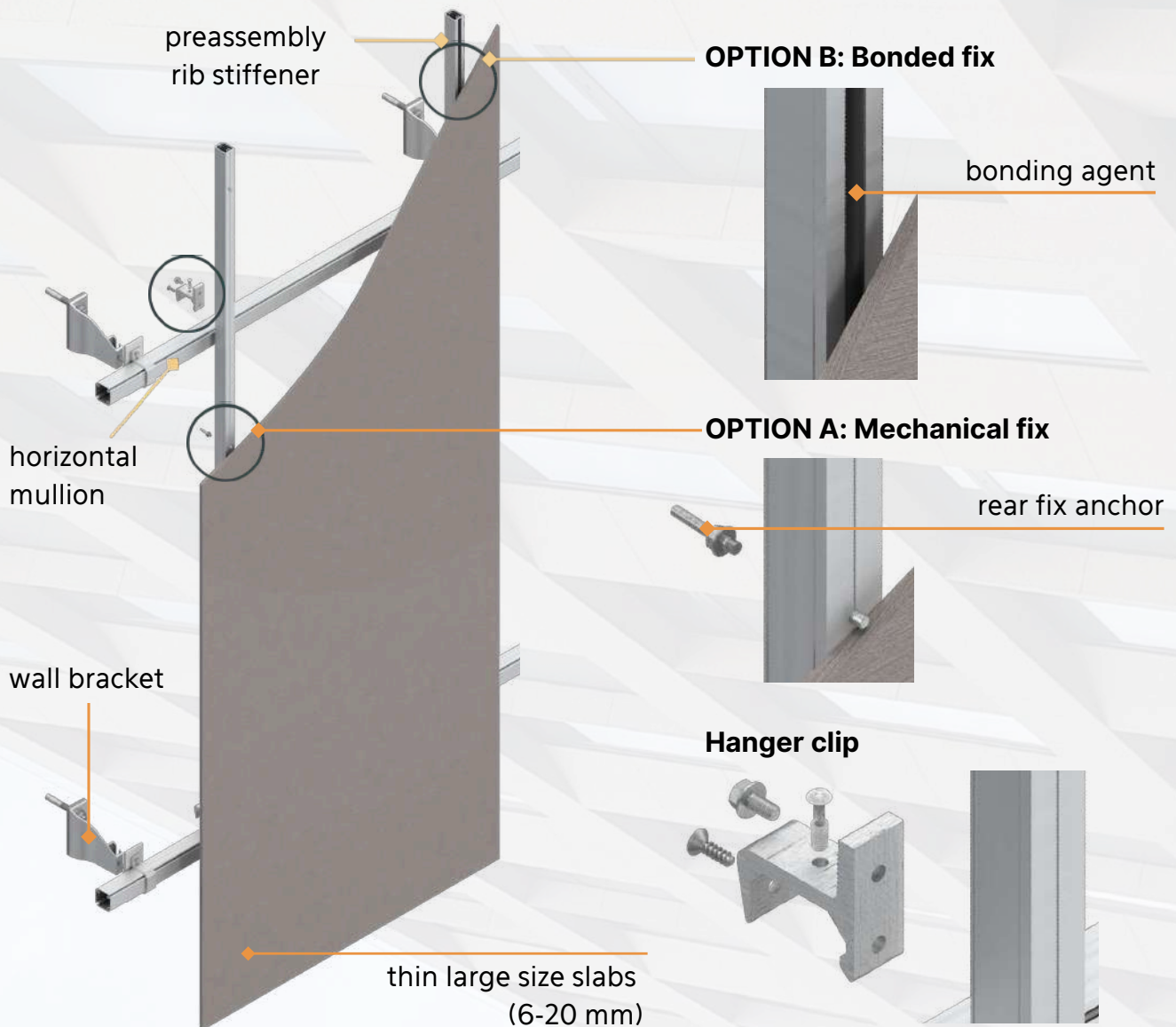
precision side slot
(recommended)



side hole












rear hole
(straight,
undercut)



- Variety of clips for all panel fixing methods (slot, side and rear)
- Rib stiffening for preassembly of large size thin panels – mechanical & bonded fix

BILDA® Advantages and benefits for all stakeholders

 <p>Architects:</p>	 <p>Façade Engineers:</p>	 <p>General Contractors:</p>
<ul style="list-style-type: none"> • unleash creativity, • design sustainably, • minimize constraints, • regain & retain control! 	<ul style="list-style-type: none"> • optimize processes, • design with confidence, • unleash productivity, • minimize carbon footprint! 	<ul style="list-style-type: none"> • simplify management, • optimize coordination, • improve QA & QC, • control schedule!
 <p>Envelope Installers:</p>	 <p>Materials Manufacturers:</p>	 <p>Commercial Partners:</p>
<ul style="list-style-type: none"> • improve productivity, • increase profitability, • enjoy work facility, • enhance proposition! 	<ul style="list-style-type: none"> • enjoy technical support, • improve coordination with planners, • expand business horizon, • add value to your proposal! 	<ul style="list-style-type: none"> • increase profitability, • enjoy sales growth, • support customers easily, • expand market share!
 <p>Unique Concept</p>	 <p>Basic Advantages</p>	 <p>Benefits in Numbers</p>
<p>Mullion/Strut - rigid & multi-functional</p>	<p>Provides structurally optimized solutions</p>	<p>20-30% Savings on envelope materials</p>
<p>Components - integral & interlocking</p>	<p>Simple lego-like intuitive connections - minimised number of installation operations</p>	<p>50-60% Savings on installation expense</p>
<p>One SuperSystem - for any cladding</p>	<p>Simplifies envelope realization process</p>	<p>30-40% Savings on management time</p>
<p>Cladding assemblies - optimized, lean, min thermal bridging</p>	<p>Facilitates low Carbon, affordable solutions</p>	<p>40-50% Reduction of Carbon footprint</p>

BILDA® Panel fixing socket processing

Machinery & tools for slotting & drilling, for the factory and the building site.

Table Rig

- highly efficient, fast and multifunctional;
- circular water cooling;
- light-weight (59-76 kg), portable;
- multidirectional rolling wheels for easy handling.



Handheld machines

- stable and easy to operate;
- water cooled;
- light (4.7kg), compact, portable;
- suction cup model available;
- low cost.



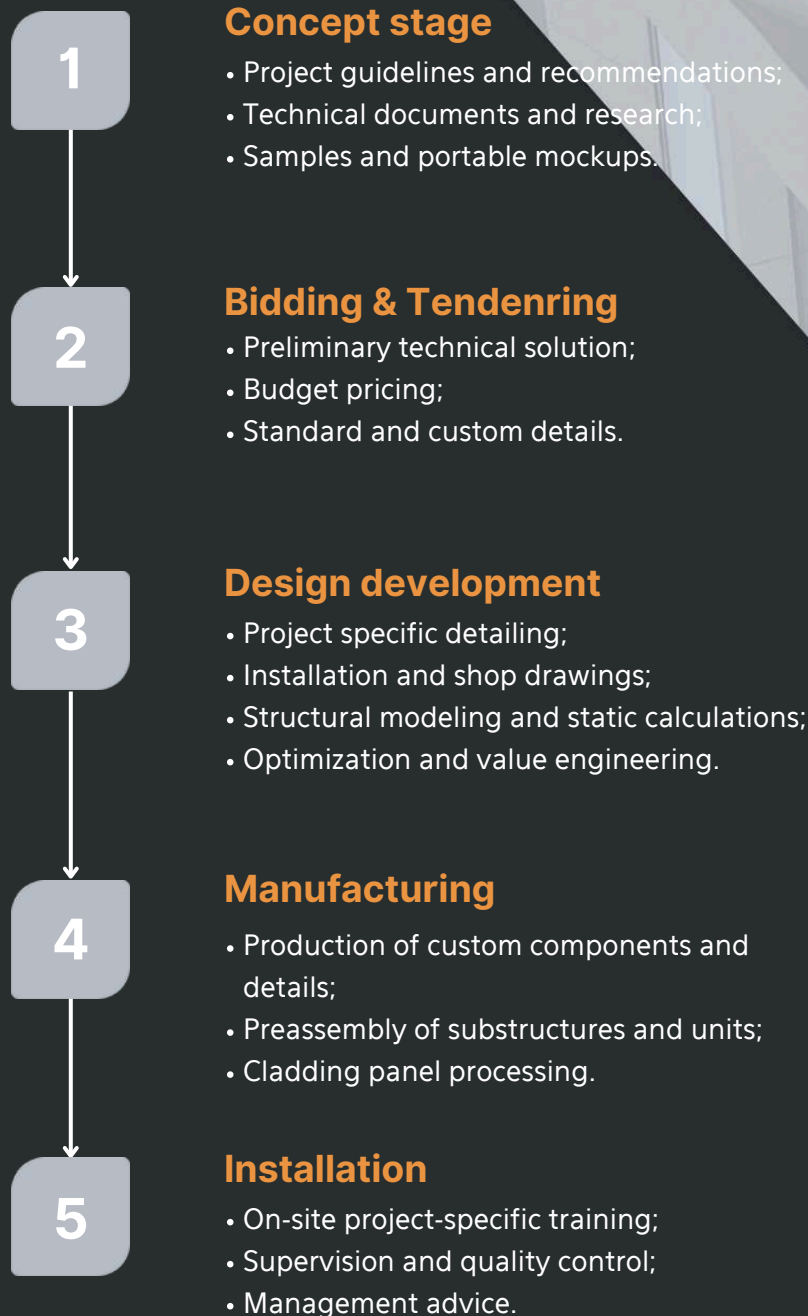
Tools

- diamond, widia, carbo-flex – standard and special sizes;
- milling wheels for BILDA precision slot (52/2.6mm, 58/3.6mm), bespoke sizes available on demand;
- drilling bits for holes of 6,8,10 and 12 mm diameter;
- usable with other machines: CNC, various handheld routers, angle grinders, etc.



With you from concept to installation

BILDA team, in addition to system component supply, offers technical support and advice. Free training is provided for façade planners and installers, interested in using BILDA System in their projects. With our long experience in envelope building activities we can provide assistance in:



With you after...

BILDA in-house Training Center operates for our customers and partners who wish to know more about rainscreens, our products and innovations. We will share skills and knowledge (accumulated for more than 30 years) of proper cladding processes and BILDA system application. Full technical support at your disposal.



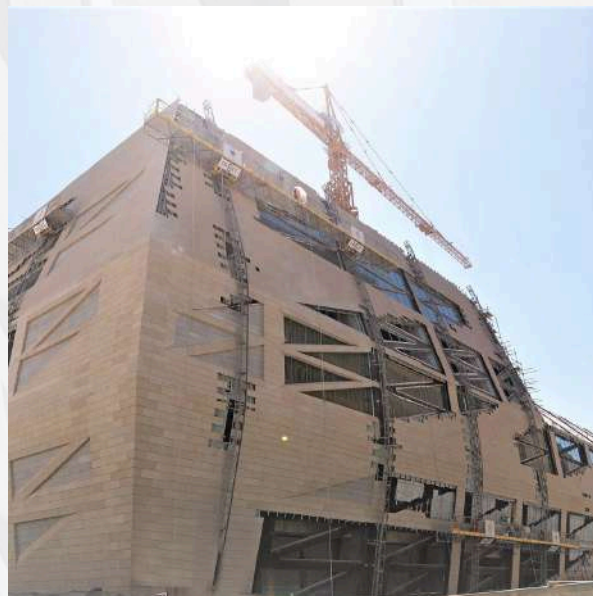
**Zalmhaven Tower,
Rotterdam, The Netherlands**



**Onyx Residence,
Frankfurt, Germany**



**The Foundation Parnell,
Auckland, New Zealand**



**University Sports Complex,
Kuwait City, Kuwait**



scan to
download
BILDA
catalogue

➤ **Internationally:**

📍 3A Ivan Borimechkata Str., 1756 Sofia

☎ +359 2 9744 888; +359 899 992 992

✉ bilda@stoa.net 🌐 www.bilda.net

➤ **SE Asia, AU/NZ:**

🌐 www.bilda.nz

Book a meeting!

Send your project for a technical solution and quote!